

get it **working** and keep it working

Refer to the maker's instructions for fixing and maintenance details.

further information

- **Smoke alarms must comply with the Australian Standard.** Look for AS 3786 or SSL logo on the label.
- **240volt smoke alarms** must be fixed by a licensed electrician.
- **The owner of a rental property** is responsible for fixing the appropriate smoke alarms.
- **For people with a hearing impairment**, smoke alarms may be fitted with special attachments.
- **Multistorey homes** – it is advisable to have an alarm on every storey.

The requirements outlined in this brochure are the minimum required by law from 1 January 2000.

For more information contact:



Metropolitan Fire Service

99 Wakefield Street, Adelaide
 Phone: 8204 3611
 Email: firesafety@samfs.sa.gov.au
 Website: www.samfs.sa.gov.au

OR



Country Fire Service

20 Richmond Road, Keswick
 Phone: 8204 3333
 Email: cfshq@cfs.org.au
 Website: www.cfs.org.au

Regional Offices

Stirling	phone 8339 6700
Willaston	phone 8522 6088
Murray Bridge	phone 8532 6800
Port Augusta	phone 8642 2399
Naracoorte	phone 8762 2311
Port Lincoln	phone 8682 4266

Don't read English?

This brochure contains important information about fire safety in your home. If you do not understand what you must do, then contact your local Community Centre and get help from a person who can translate it for you.

Ova brošura sadrži važne informacije o bezbjednosti od požara u vašoj kući. Ukoliko ne razumijete šta trebate učiniti, kontaktirajte svoj lokalni centar zajednice (Community Centre) i zatražite pomoć od osobe koja vam to može prevesti.

這本小冊子為你提供了關於你家裡的煙霧警鐘的重要須知情況和注意事項。如果你不明白其中內容，應該聯係當地的社區中心，你可以在那裡找人替你翻譯。

Ova brošura sadrži važne informacije u svezi zaštite od požara u Vašem domu. Ako ne razumijete što morate učiniti, obratite se svom mjesnom društvenom centru (Community Centre) i potražite pomoć od koje osobe koja Vam to može prevesti.

Αυτό το φυλλάδιο περιέχει σημαντικές πληροφορίες σχετικά με την ασφάλεια εναντίον πυρκαγιάς μέσα στο σπίτι σας. Αν δεν καταλαβαίνετε τί πρέπει να κάνετε, τότε ελάτε σε επαφή με το Κοινοτικό Κέντρο της περιφέρειάς σας και ζητήστε βοήθεια από ένα άτομο που μπορεί να σας το μεταφράσει.

Questo volantino contiene informazioni importanti riguardo la protezione antincendio in casa sua. Se non capisce bene cosa deve fare, per favore si metta in contatto con il suo Centro Comunitario locale e chiedi l'aiuto di una persona che glielo possa tradurre.

សន្លឹកសំបុត្រនេះមានព័ត៌មានសំខាន់ៗសម្រាប់អ្នកដែលមិនសូវចេះអង់គ្លេស។ ប្រសិនបើអ្នកមិនយល់អ្វីមួយអំពីការដំឡើងឬការប្រើប្រាស់ឧបករណ៍ពន្លឺភ្លើងសម្រាប់ការពារភ្នំភ្លើងនៅក្នុងផ្ទះរបស់អ្នក សូមទាក់ទងទៅមណ្ឌលសហគមន៍ប្រចាំតំបន់របស់អ្នក រួចហើយ សុំអ្នកចេះអង់គ្លេស ឲ្យគាត់បកប្រែជូនអ្នកស្តាប់។

Broszura ta zawiera ważne informacje na temat zabezpieczenia przeciwpożarowego w domu. Osoby, które nie rozumieją co muszą zrobić, powinny się skontaktować z ich miejscowym Community Centre i zwrócić się o przetłumaczenie broszury.

В данной брошюре содержится важная информация о противопожарной безопасности Вашего дома. Если Вы не знаете, что делать, обратитесь в Ваш районный Общественный центр (Community Centre) и попросите кого-нибудь перевести эту брошюру для Вас.

Ova brošura sadri važne informacije u vezi bezbednosti od požara u vašoj kući. Ako ne razumete šta morate da uradite, u tom slučaju stupite u vezu sa centrom svoje zajednice i potražite pomoć neke osobe koja to može da vam prevede.

Este folleto contiene información importante sobre la seguridad de su hogar en caso de incendios. Si no entiende lo que debe hacer, póngase en contacto con el Centro para la Comunidad local y obtenga ayuda de una persona que pueda traducírselo.

Nội dung của tài liệu này gồm phần hướng dẫn quan trọng về sự an toàn trong việc đề phòng hỏa hoạn trong nhà quý vị. Nếu quý vị không hiểu là quý vị phải làm gì, xin hãy liên lạc với Trung Tâm Cộng Đồng địa phương của quý vị để nhờ sự giúp đỡ của người có thể phiên dịch tài liệu này cho quý vị.

IMPORTANT REMINDER

smoke alarms save lives

You need to install **smoke alarms** by 1 January 2000



what

The type of smoke alarms you need depends on when you first owned your home.

do I need?

Home owned before 1 February 1998
 Replaceable battery powered

Home purchased on or after 1 February 1998
(to be fitted within 6 months of date of purchase)
 240volt mains powered

OR

10 year life non-replaceable, non-removable permanently connected battery powered

Home built on or after 1 January 1995
 240volt mains powered (required by the Building Code of Australia)

Smoke alarms are usually powered by:

- 240volt mains supply; OR
- a replaceable battery; OR
- a 10 year life non-replaceable, non-removable permanently connected battery.

NOTE: If you buy a house after 1 January 2000 which has a replaceable battery powered smoke alarm, you need to install either a 240volt mains powered, or 10 year life non-replaceable, non-removable permanently connected battery powered smoke alarm.

where can I buy one?

- Department stores
- Hardware stores
- Electrical retailers
- Security companies
- Fire protection companies

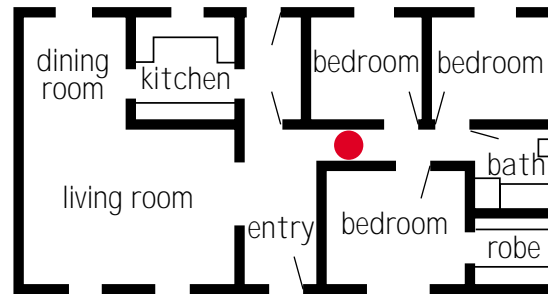
Smoke alarms must be located to warn you of a fire when you are asleep so you can escape.

where do they go?

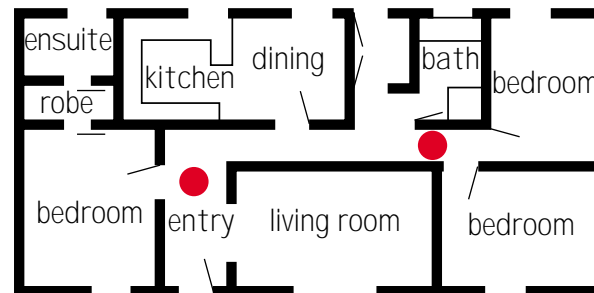
Depending on the layout of the home, it may be necessary to have more than one smoke alarm to provide sufficient warning.

Smoke alarm locations

The plans below show examples of the best positions for alarms. If you are not sure, check with the Fire Services.

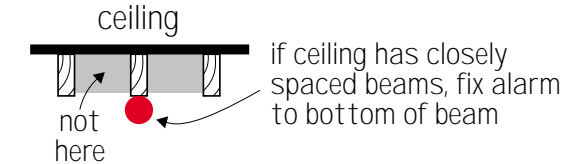
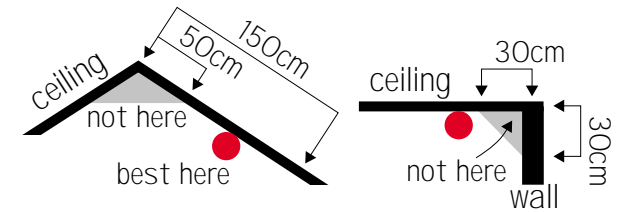


● smoke alarms needed



Position your alarms

- centrally in a passage
- if sloping ceiling no closer than 50cm and no further than 150cm from the apex as shown on the drawing below
- on the ceiling at the head of the stair to the top storey
- a minimum distance of:
 - 30cm from a wall/ceiling junction – see the drawing below;
 - 100cm from a fluorescent light;
 - 30cm from other lights; and
 - 100cm from ceiling fans or airconditioning vents.



what if I don't install one?

There is a maximum fine of \$750 for not installing smoke alarms, but the real penalty may be your life or the life of a member of your family.